

## Production Scheduler

AI-BASED ALGORITHMS THAT OPTIMIZE PRODUCTION PLANS, INCREASE THROUGHPUT,  
REDUCE WASTE AND IMPROVE ON TIME DELIVERY



### OVERVIEW

Production Scheduler acts as a Digital Assistant that schedules work orders to optimize production, integrate planning and scheduling with the factory floor, and optimize factory resources such as materials, human resources, equipment, machines and tools.

Production Scheduler, part of Plataine's TPO (Total Production Optimization) suite of applications, uses AI-based algorithms to generate an optimal schedule while leveraging historical and real-time data, bottleneck prediction, equipment efficiency and expected duration for tasks, to continuously improve the schedule, enhance throughput and on time delivery.



Fully  
synchronized with  
the shop floor



Proactively  
adjusted schedule  
in real time



Optimal scheduling to  
achieve business goals  
with one-click

### TPO Suite

Plataine's TPO (Total Production Optimization) is a modular suite that offers Industry 4.0 solutions to solve production challenges by utilizing Plataine's Digital Assistants, delivering alerts and smart recommendations in real-time to digitalize and optimize manufacturing processes. Plataine's TPO suite of applications include Material & Asset Tracker, Time Sensitive Material Manager, Tool Manager and FabricOptimizer.

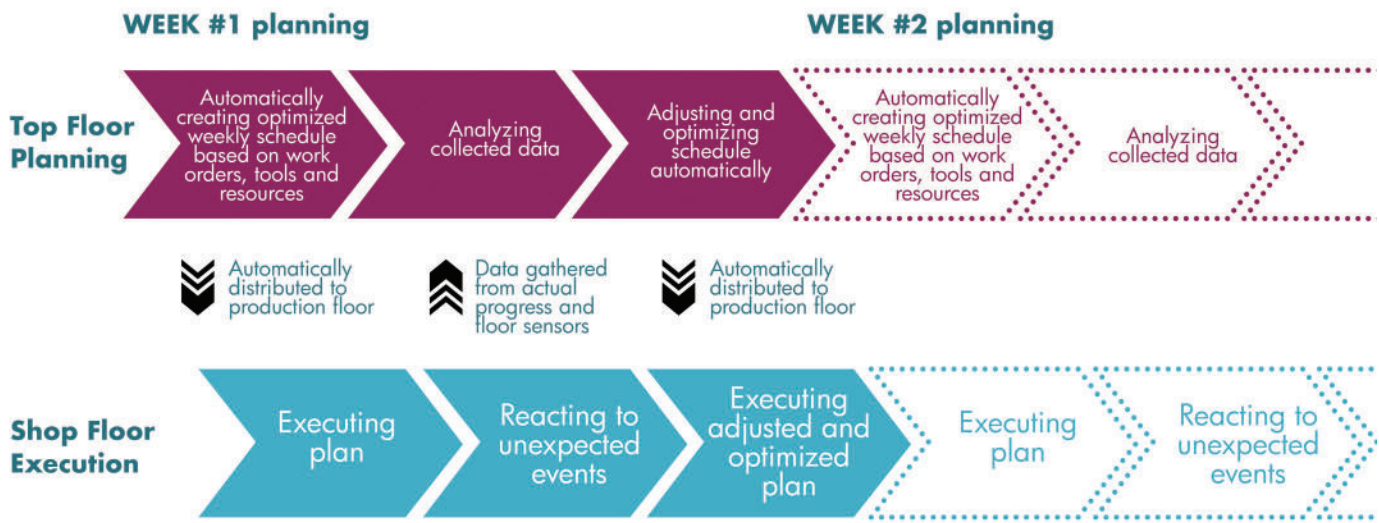
### Benefits

- Automatically generates an optimal production schedule
- Provides real-time production floor visibility, fully synchronized with the shop floor
- Reacts on the fly to unexpected events
- Offers quick auto-scheduling and optimized resource utilization
- Seamlessly integrates with all other TPO suite applications and external systems
- Easy to use, intuitive User Interface

### Key Features

- Intuitive user face
- Using drag and drop to schedule
- Capacity driven plan and automatic validation of assigned tasks
- Continuous optimization and reaction to changes and unexpected events
- Real-time production progress monitoring and alerts

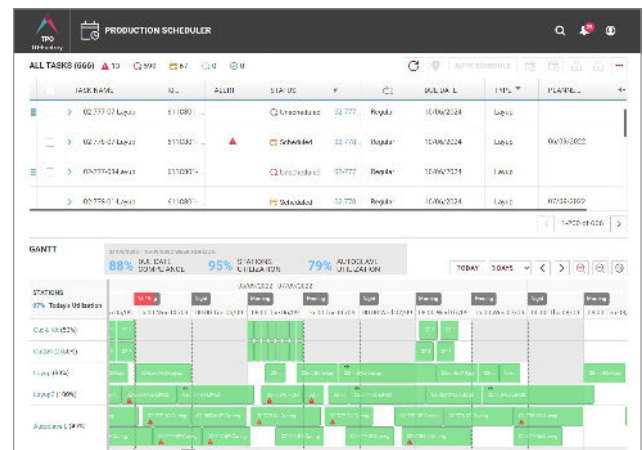
## Schedule is Always Optimized, Closing the Gap Between Planning and Execution



## Product Features

### AI Digital Assistant predicts and alerts to minimize risks

- Track production progress and compare planned vs. actual
- Automatically calculates work order completion prediction based on the station capacity, tasks queue, and work order completion status
- Alerts are sent to prevent missing production deadlines
- The algorithm re-adjusts and re-assigns the tasks to keep the schedule valid and optimized
- Scheduling objectives are goals driven and can be set and adjusted by the company/user
- Optimized and optimal schedule creation with one-click considering multi-dimensional resources availability
- Semi-automatic and manual scheduling tools to schedule tasks with intuitive UX



**ABOUT PLATAINE:** Plataine is the leading provider of Industrial IoT and AI-based optimization solutions for advanced manufacturing. Plataine's intelligent, connected Digital Assistants take manufacturing to the next level by automating and optimizing decision flows on the production floor. Combining state-of-the-art AI with extensive manufacturing knowledge, Plataine's cloud-based solutions continually assess current status and predict future events on the production floor, to provide actionable insights, alerts and recommendations, empowering production management and staff to make optimized decisions in real-time, every time. Plataine advances the 'Factory of the Future' worldwide and enables global manufacturers such as Airbus, GE, IAI, Triumph, MRAS (an ST Engineering company), Alestis, Kinenco-Kaman, IFS, Light & Strong, Kanfit and Ethan Allen to drive digital transformation and further increase their business value. For more information visit: [www.plataine.com](http://www.plataine.com).