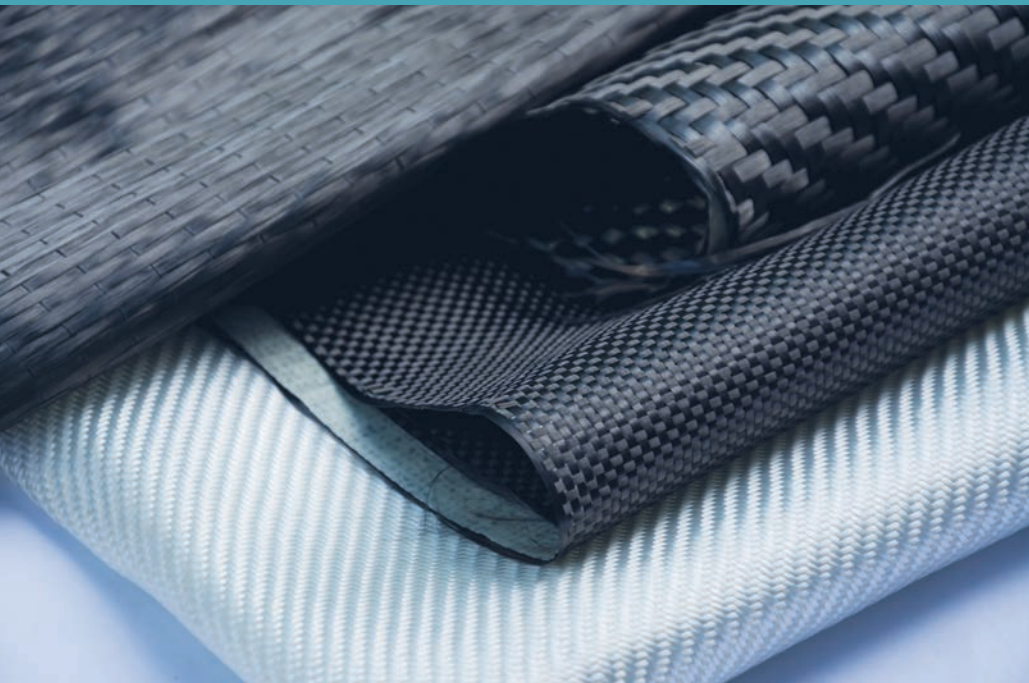


Time Sensitive Material Manager Solution FREE TRIAL PACKAGE NOW AVAILABLE



Benefits

- Provides full control over your time sensitive material inventory
- Enables a digitized and paperless production process
- Streamlines composite parts production
- Increases material utilization and reduces waste
- Prevents usage of expired material by providing actionable alerts and recommendations
- Ensures optimal material selection per work order
- Designed for easy integration

OVERVIEW

Plataine is the leading provider of AI-based IIoT software for manufacturing optimization. The Time Sensitive Material Manager (TSMM) delivers a complete production line management solution for tracking materials that are time and temperature sensitive. TSMM is suitable for materials such as composites pre-pregs and resins, throughout production, ensuring higher quality while avoiding re-work and waste.



Automatic tracking of remaining shelf-life and expiration



Optimal, AI-based material assignment to jobs



Alerts prevent material expiration



Complete traceability and quality control

Key Features

- Material and asset tracking capabilities connect all factory assets, creating and supporting a streamlined production process in real-time
- Total visibility of all assets' location, condition and status in real-time for constant process optimization
- Enhanced quality control with a Digital Thread that records the production process automatically

Time Sensitive Material Manager Solution

The solution tracks and monitors location, condition and status of all materials and kits, and automatically calculates exposure time.

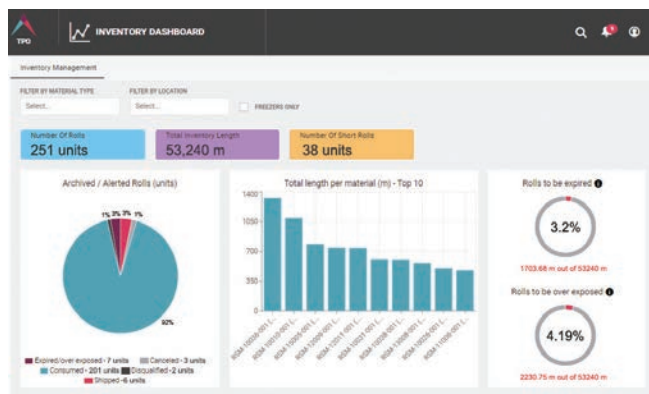
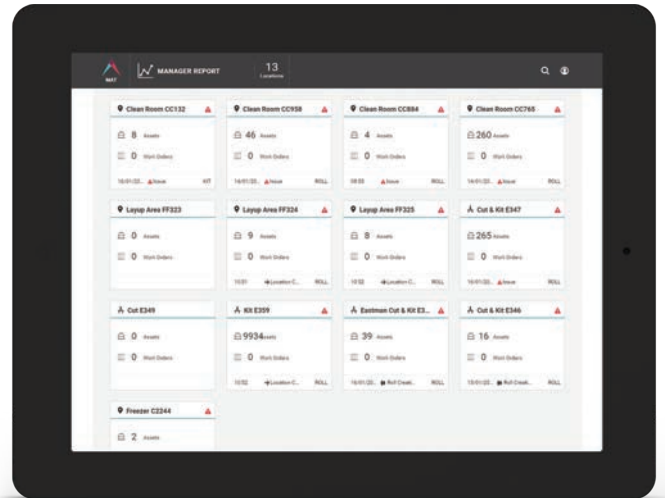
- Eliminates quality issues related to using expired material and material that is likely to expire by the time the work order is completed, to eliminate rework and production delays or write-offs for expired material
- Improves on-time delivery
- Enables complete traceability through the entire manufacturing process as the Digital Twin records every aspect of an assets cycle from raw material to end product

RFID Tracking

- All assets' locations monitored via passive RFID capabilities
- Optional pro-active location alerts and feedback feature
- Alerts and historical log available

Designed for easy integration

- Easy integration with all standard manufacturing systems such as ERP and MES
- Ensures continuity of information flow
- Remote implementation is available



OUR FREE TRIAL PACKAGE

The Time-Sensitive Material Manager 30-day free trial package includes all product features to allow you to receive a full user experience, demonstrating how a large-scale deployment would work in your production environment.

ABOUT PLATAINE: Plataine is the leading provider of AI-based and Industrial IoT optimization solutions for advanced manufacturing. Our solutions provide intelligent, connected Digital Assistants for production floor management and staff, empowering manufacturers to make optimized decisions in real-time, every time. Plataine's technologies are used by leading manufacturers worldwide, including Airbus, GE, IAI, Triumph, Stelia North America, Alestis, MRAS, TPI, Kinenco-Kaman, IFS, Light & Strong and Ethan Allen. For more information, visit: www.plataine.com.