

*Reduce Total Frame Costs
Eliminate Excess Inventory
Improve Router Utilization
Shorten Time to Market
Slash Material Cost by 10% and More*





See for Yourself

Send us your order data and see how NESTERwood Optimizer can improve your plywood utilization and generate an optimal tool path for your CNC router.

Proven Results

NESTERwood is successfully used by manufacturers of furniture and other engineered wood products worldwide. Contact your nearest office for local references.

WWW.PLATAINE.COM

Gecko



North America Headquarters

Plataine Inc.
411 Waverley Oaks Road, Suite 331
Waltham, MA 02452
Toll-Free: 1-866-500-5902

Email: info@plataine.com

International Headquarters

Plataine Inc.
34 Ha-Barzel Street
Tel Aviv, 69710
Israel

Tel: (+972) 3-769-1100
Fax: (+972) 3-769-1101
Email: info@plataine.com

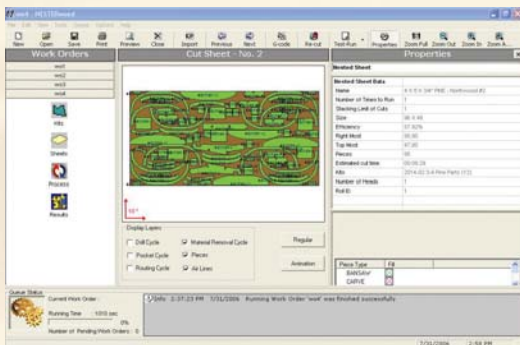
Toll-Free Numbers

USA: 1-866-500-5902
Canada: 1-800-2525-7877
Belgium, Denmark, France, Germany,
Netherlands, Norway, Switzerland,
and the UK: 00-800-2525-7877
Australia: 0011-800-2525-7877
Hong Kong: 001-800-2525-7877
South Africa: 091-800-2525-7877

Ordinary products, high prices, and extended delivery times are no longer acceptable by upholstery customers. Buyers demand high quality made-to-order products, at lower prices and with shorter delivery times. NESTERwood Optimizer enables upholstery manufacturers to respond to these market dynamics and remain viable in a competitive global environment.

Improve Material Utilization

NESTERwood's Rolling Nest automatically optimizes the placement of pieces from one or more orders on multiple sheets of plywood, resulting in material yields that are consistently higher than any other solution.



Shorten Order-to-Delivery Time

NESTERwood Optimizer turns the concept of Lean Manufacturing into a reality. Beyond improving the efficiency of individual tasks such as nesting and cutting, NESTERwood helps upholstery manufacturers automate the entire process from order to assembly, eliminating unnecessary tasks and the associated time and costs.

Reduce Work-in-Process Inventory

Adding excess parts to improve plywood efficiency is a common practice to make the most use of every sheet cut. Many of these parts are never used, and those that are eventually used incur various inventory handling and carrying costs. By cutting to exact order demand, NESTERwood Optimizer eliminates the need to cut excess parts and the high costs associated with the practice.

Increase Router Productivity

NESTERwood's optimization algorithms reduce cycle time per sheet (the time it takes to process one plywood sheet) by 10% and more, improving the productivity and reducing idle time of expensive CNC routers.

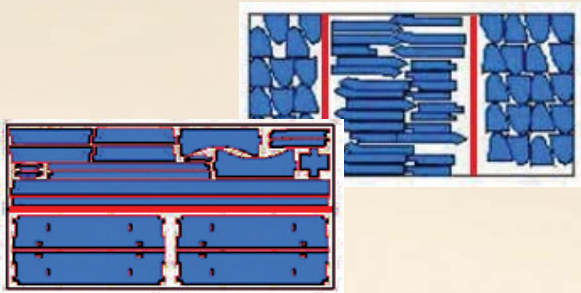
"Since we started using Nester, our frame yield has improved by roughly 10%, and the productive capacity at each plant has increased."

Cliff Thorn, VP of Manufacturing, Ethan Allen



Maximizes Material Utilization with Rolling Nest

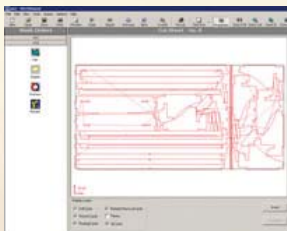
- Creates continuous cutting environment
- Orders stop/start within same sheet
- Supports both vertical and horizontal nest rollovers
- Utilizes optimum mix of sheet sizes from available inventory
- Learns from experience to continuously improve nesting



NESTERwood supports both vertical and horizontal rolling nests for maximum material utilization

Optimizes Router Tool Path

- Generates highly efficient G-Code
- Selects multiple heads automatically
- Optimizes router performance



NESTERwood automatically generates highly efficient router tool paths

Automates the Entire Production Process

- Enables true cut-to-order operations
- Electronically links to order system to receive actual order details
- Automatically nests kits and parts
- Facilitates efficient palletizing and picking
- Reduces errors and rework
- Frees-up engineers' time for higher value tasks

Bottom-Line Results

- Reduces material consumption by 10% and more
- Minimizes remnants and waste
- Eliminates over-cuts & excess inventory
- Optimizes machine and worker utilization

"Utilizing NESTERwood's RollingNest feature, an order that originally consumed 25 sheets of plywood was done using only 19 sheets."

Shea Teague, Manufacturing Manager, Southern Furniture

